



PROJECT - 05

FRIENDSHIP HOSPITAL

Community Hospital & Healthcare Infrastructure

Climate-Resilient Design
Sustainability in Design
Economic Sustainability

Architects:

Kashef Chowdhury/URBANA

Location:

Satkhira, Bangladesh

Area:

~5,800 m²

Year of Completion

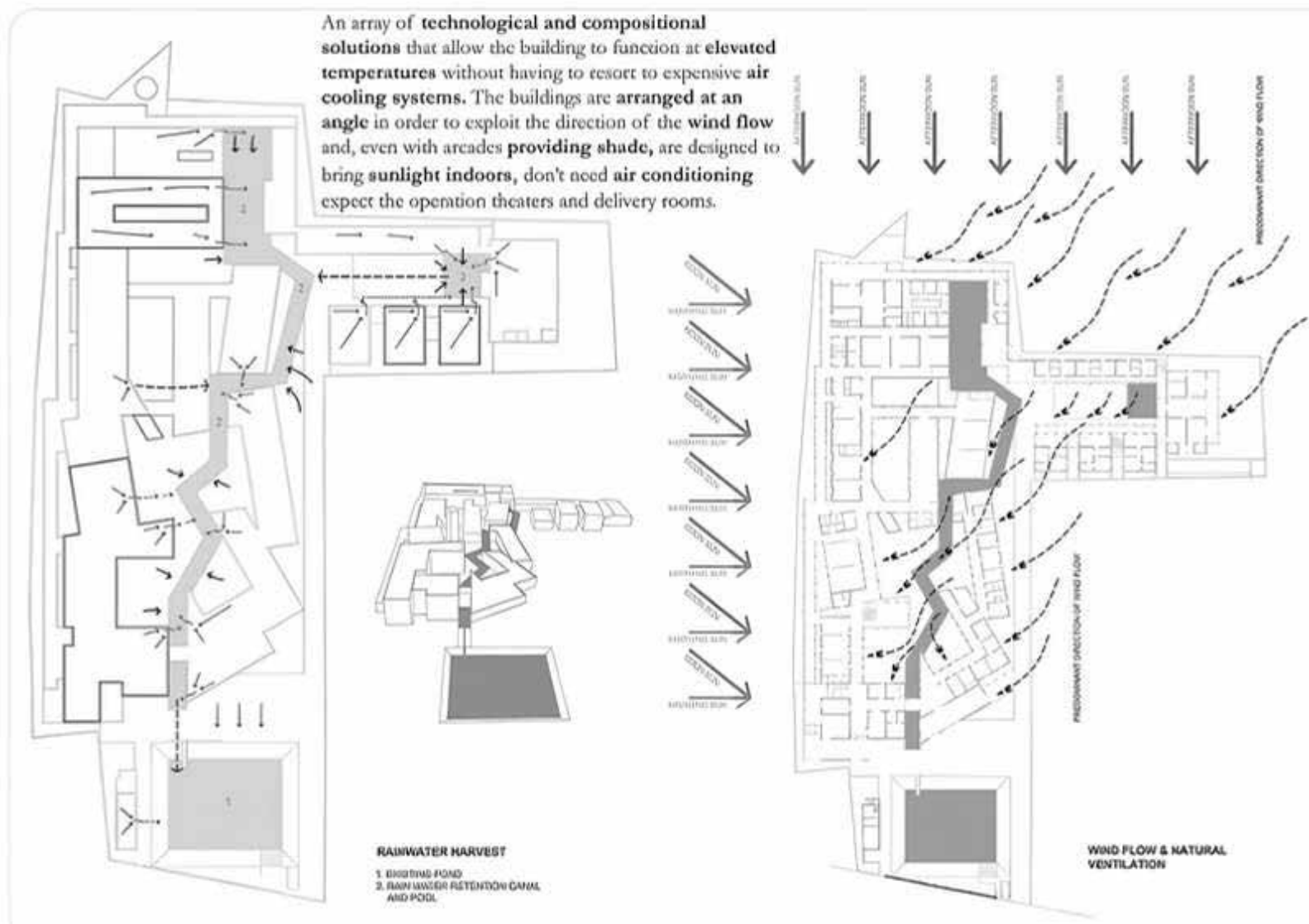
2020

05

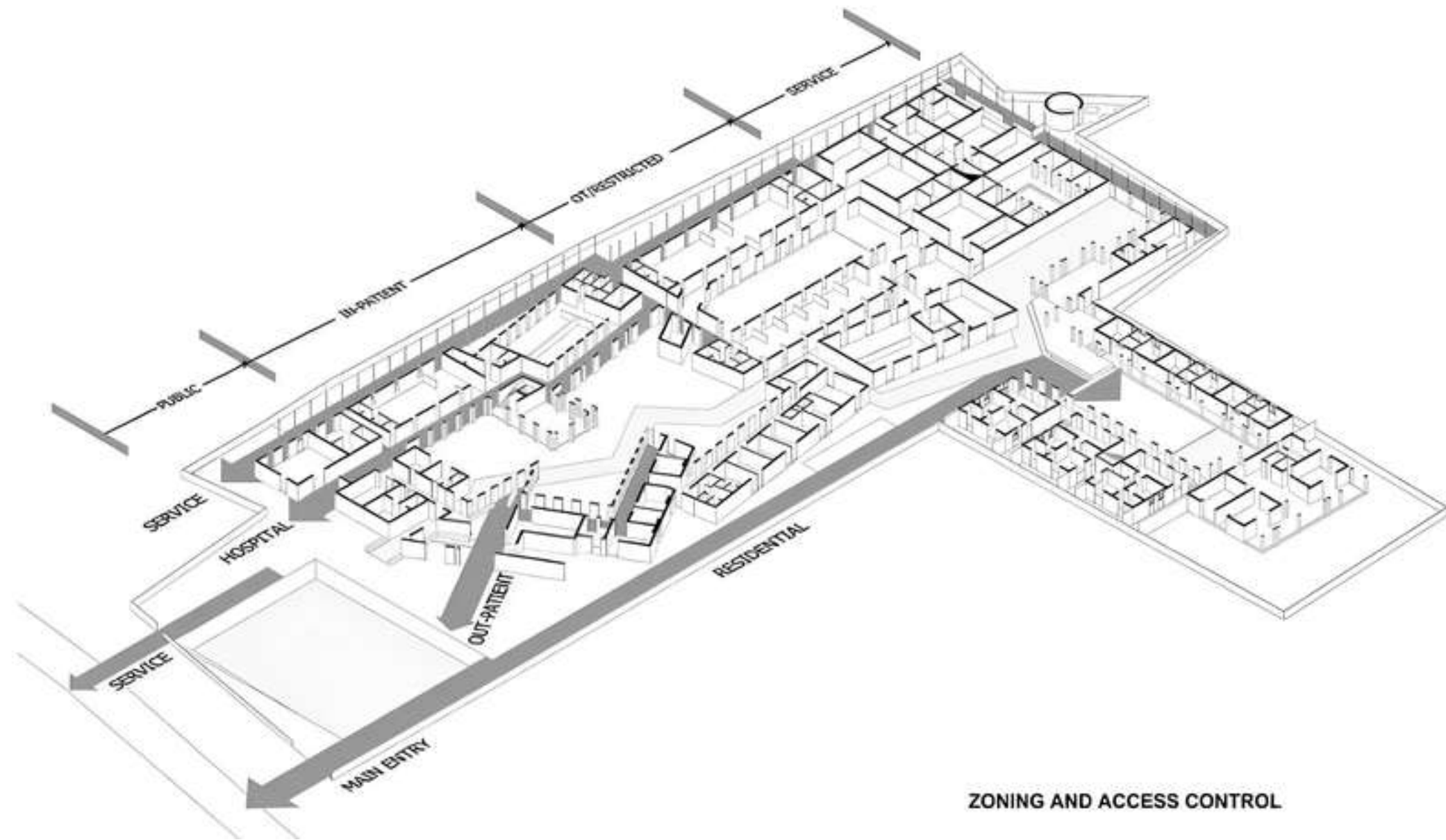


Friendship Hospital by Kashef Chowdhury/URBANA is a critically acclaimed healthcare project in rural Bangladesh that demonstrates how architecture can deliver **social dignity, environmental resilience**, and **accessible healthcare within resource-constrained contexts**. Located in Satkhira, a **climate-vulnerable region affected by cyclones, flooding, and saline water intrusion**, the hospital provides essential medical services to underserved communities while responding sensitively to the local environment and culture.

Designed for the non-profit organization Friendship, the project rethinks conventional hospital architecture through **passive design, spatial simplicity**, and **community-centered planning**. Instead of relying heavily on energy-intensive systems, the hospital uses climate-responsive strategies that **maximize natural ventilation, daylight, and thermal comfort** within Bangladesh's hot and humid climate.



The building is organized around a **series of courtyards, water channels, and shaded circulation** spaces that create a calm healing environment while improving environmental performance. A **linear waterbody** running through the center of the complex acts both as a symbolic and **climatic device, enhancing evaporative cooling, reducing heat, and organizing movement** across the campus.



Natural ventilation is a defining feature of the design. Open corridors, perforated brick walls, and carefully oriented blocks allow **continuous airflow** throughout the building, minimizing dependence on mechanical cooling systems. The **extensive use of daylight** further reduces operational energy demand while improving patient well-being and indoor environmental quality.



Materiality plays a significant role in the project's sustainability approach. **Locally sourced brick** was used extensively for its thermal properties, durability, affordability, and cultural familiarity. The **restrained material palette** creates an architecture that feels rooted in place while **reducing transportation-related environmental impact and supporting local craftsmanship**.

The hospital also addresses broader issues of **social sustainability and equity**. Designed **to serve low-income and climate-affected populations**, the project demonstrates how high-quality architecture can **improve dignity, accessibility, and emotional well-being** in public healthcare environments. Human-scaled spaces, shaded courtyards, and visual connections to landscape create a therapeutic atmosphere that contrasts with institutional hospital typologies.





Rather than imposing monumental architecture, the project prioritizes **humility, resilience, and environmental harmony**. Its **low-rise configuration** and **porous spatial organization** allow the building to coexist naturally with the surrounding rural landscape while remaining adaptable to local climatic conditions.

Friendship Hospital illustrates how socially responsible and climate-responsive architecture can create meaningful impact in vulnerable communities. The project highlights that sustainability is not only technological, but also cultural, social, and deeply contextual.



Globally recognized for its architectural and humanitarian significance, the hospital has become a benchmark for sustainable healthcare design in developing regions. It demonstrates that **thoughtful architecture** can **improve public health, strengthen community resilience, and respond effectively to climate challenges** through **simplicity, local intelligence, and environmental sensitivity**.



Ultimately, Friendship Hospital offers a powerful model for future civic architecture — one where **human dignity, ecological responsiveness, and social equity** are placed at the center of design.