



# PROJECT - 04

## QUAY QUARTER TOWER

Commercial Office Tower

## Adaptive Reuse

**Architects:**

3XN in collaboration with BVN

**Location:**

Sydney, Australia

**Area:**

~216,000 m<sup>2</sup>

**Year of Completion**

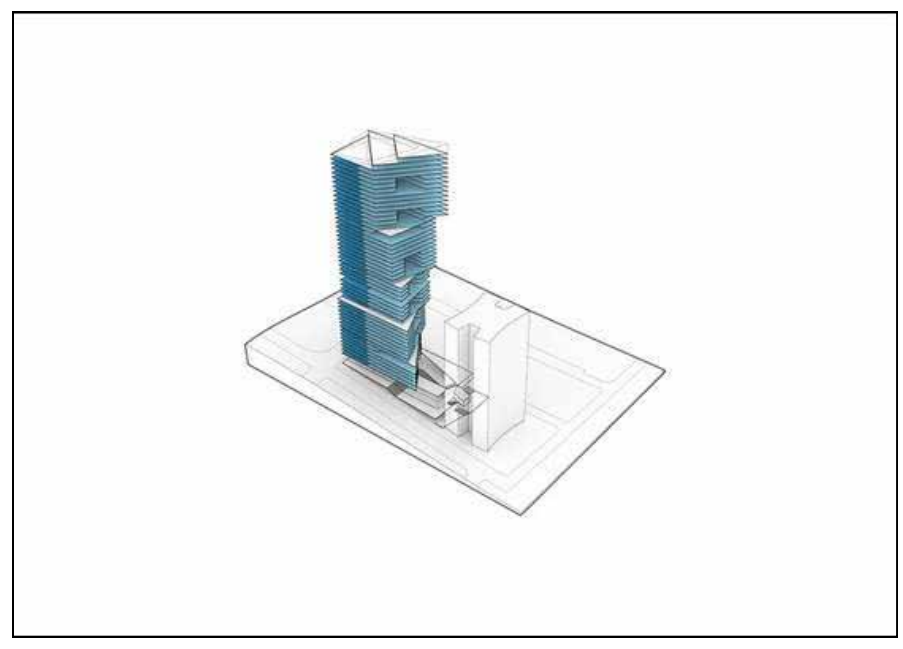
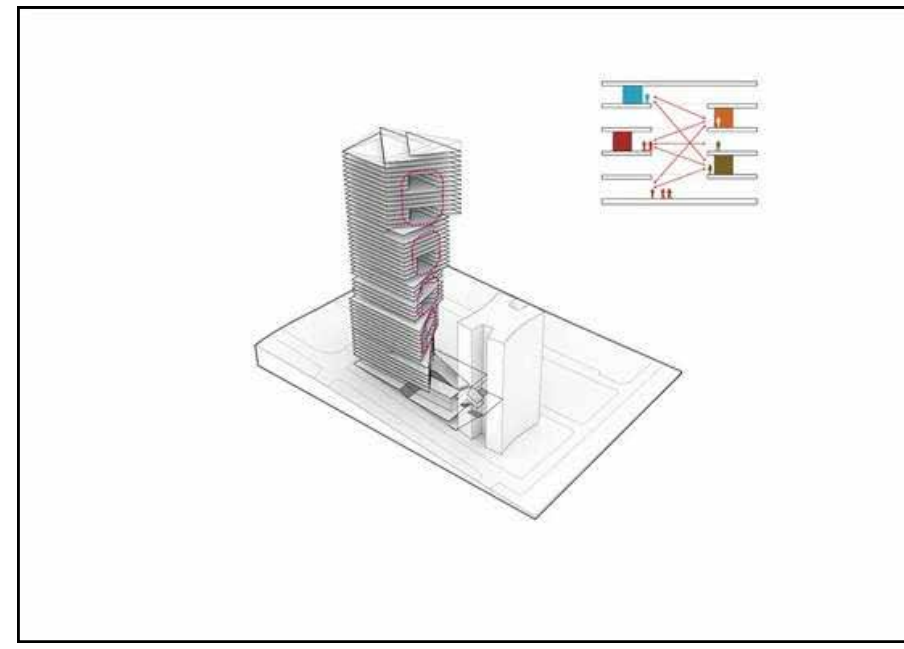
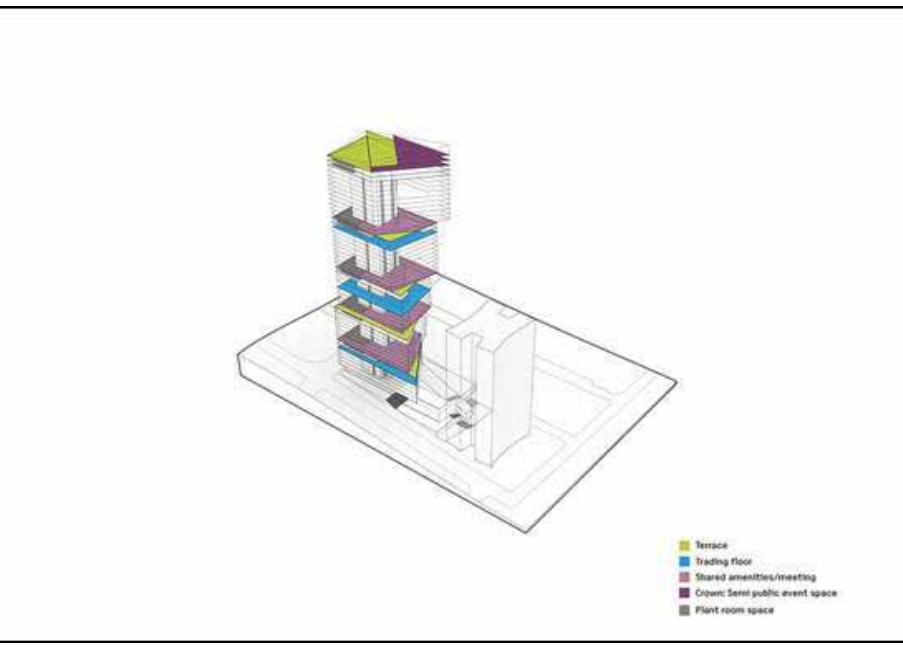
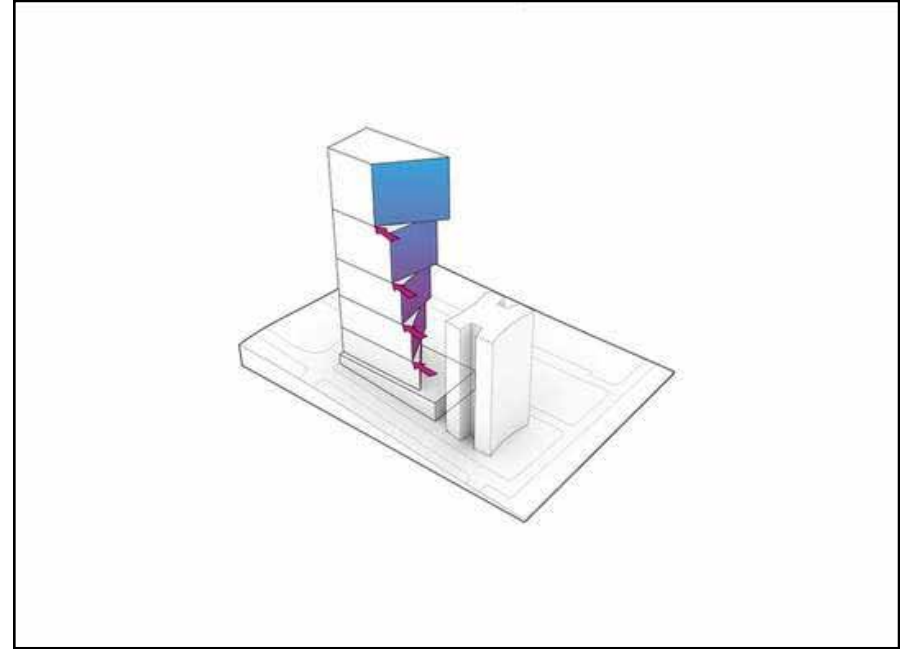
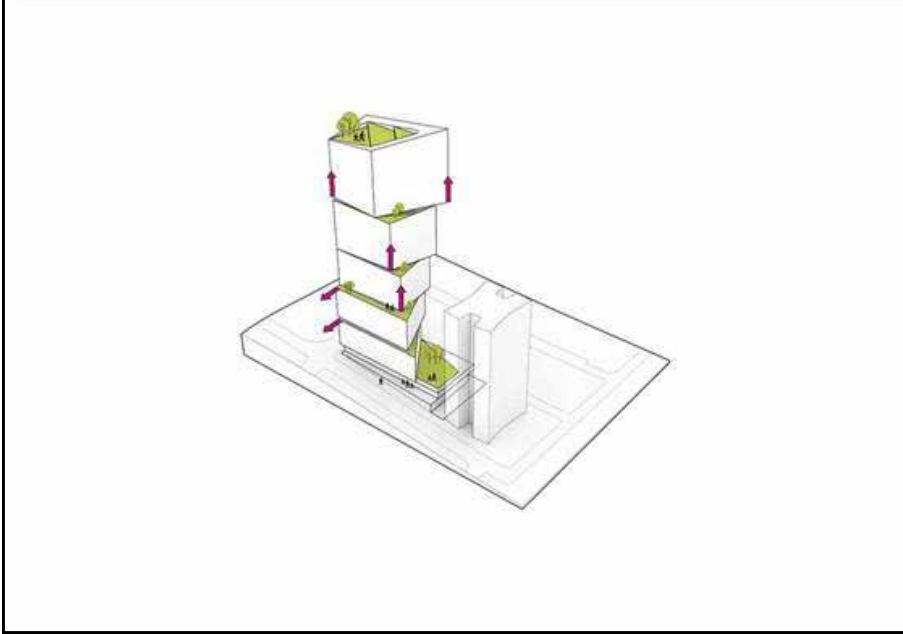
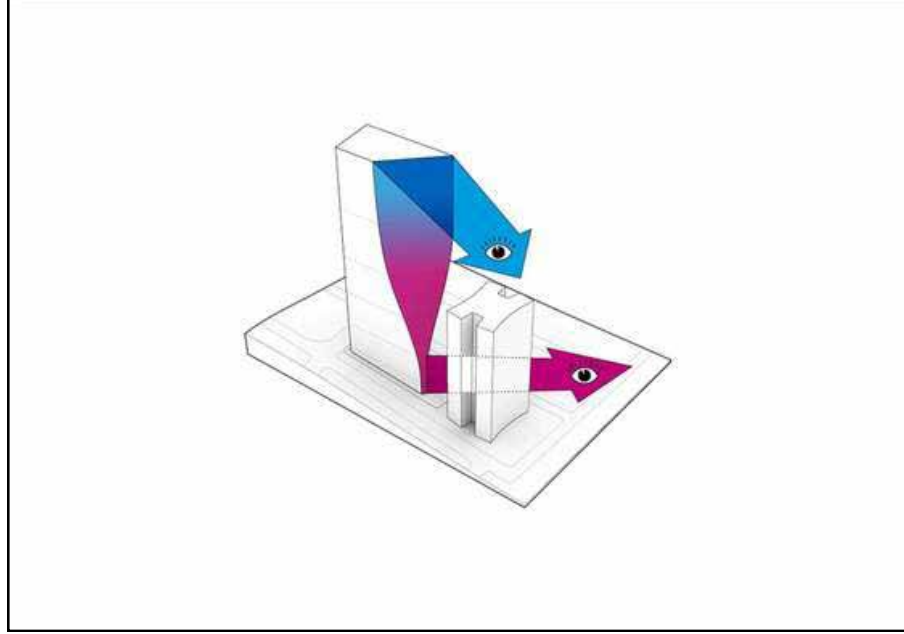
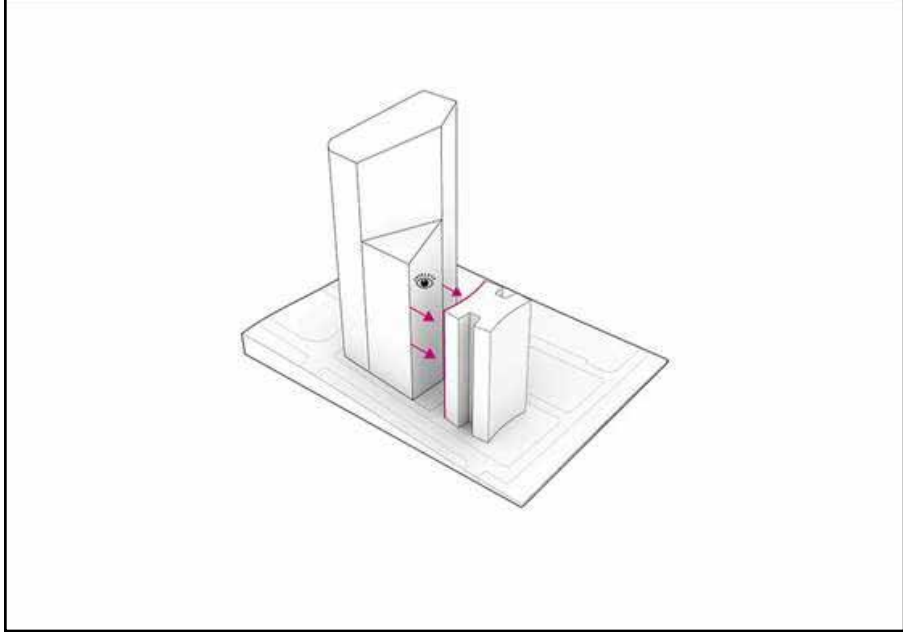
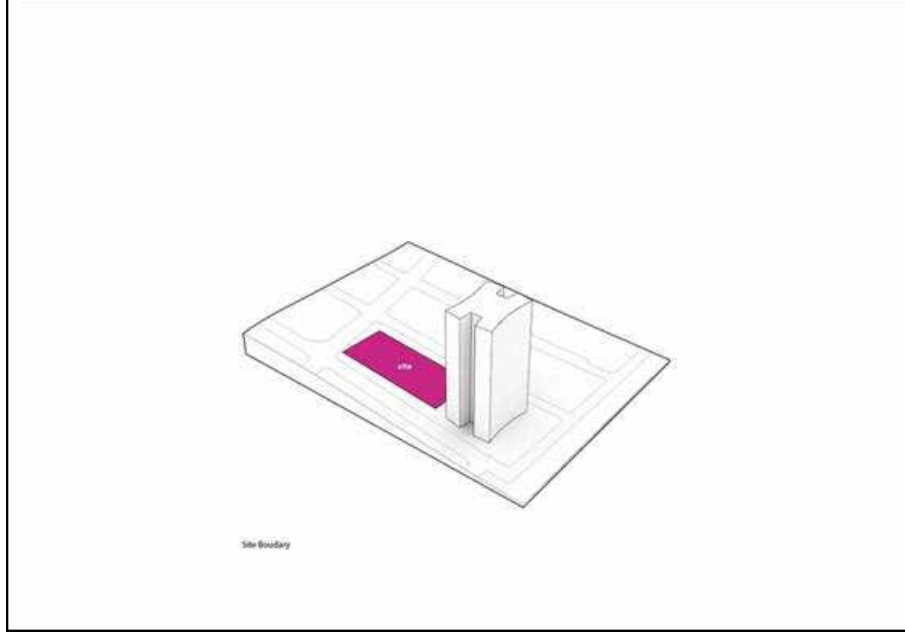
2022

04

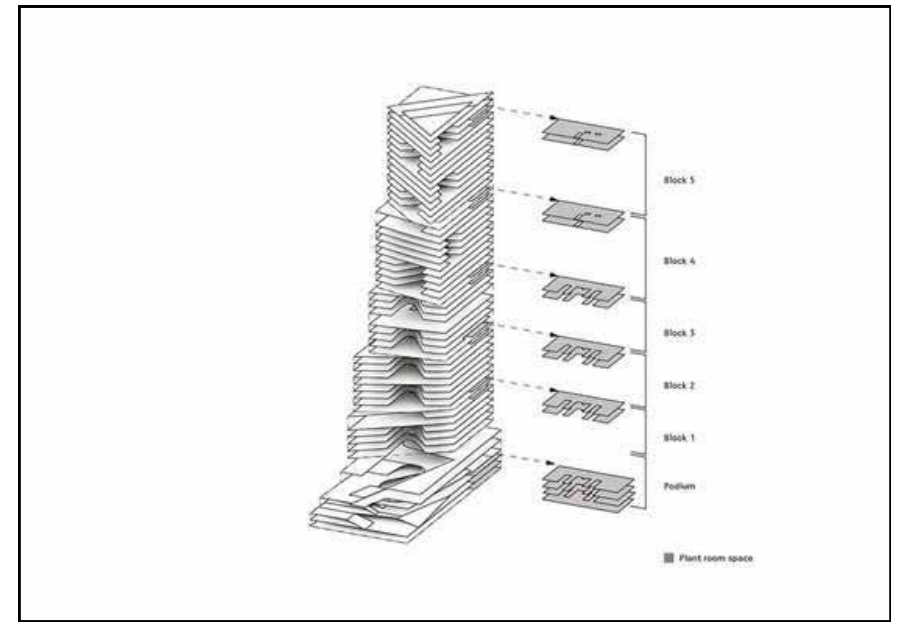
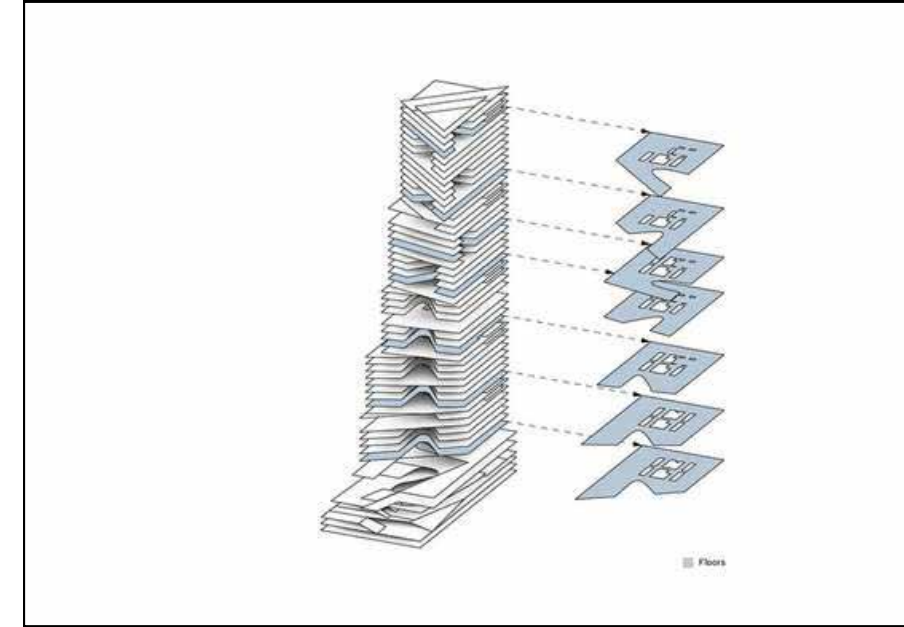
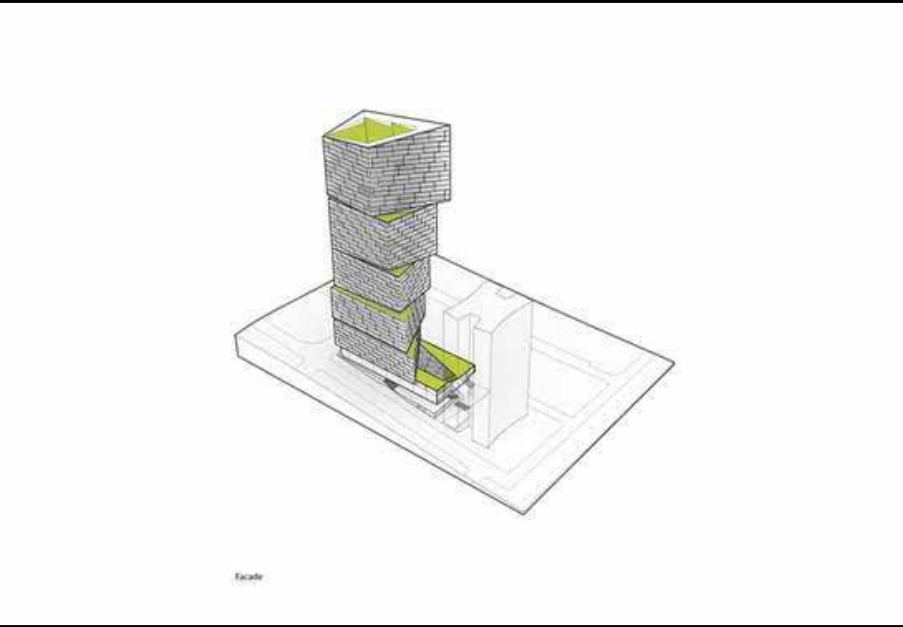
Quay Quarter Tower by 3XN and BVN is a groundbreaking commercial tower in Sydney that demonstrates how **adaptive reuse** can transform the future of high-rise urban development. Rather than demolishing the existing office tower on the site, the project **retained and reused a significant portion of the original structure**, dramatically **reducing embodied carbon, construction waste, and material consumption**.

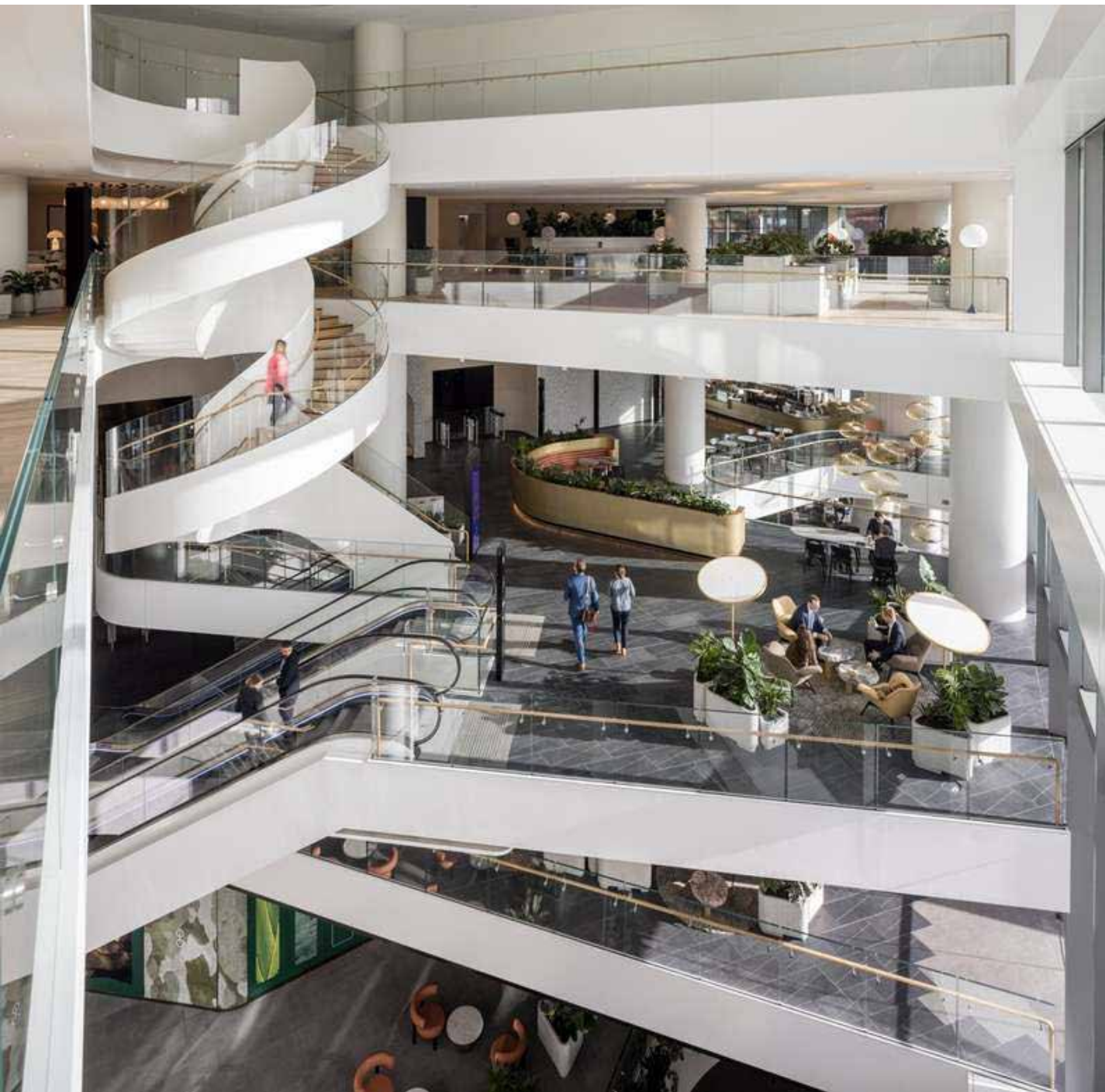
The project redefines sustainability in tall buildings by proving that large-scale regeneration can achieve both **environmental performance** and **high-quality contemporary workplace environments**. Approximately two-thirds of the original structural framework was preserved, resulting in major reductions in carbon emissions compared to a conventional new-build skyscraper.





Architecturally, the tower is composed of a series of vertically stacked and rotated volumes that create terraces, visual permeability, and interconnected workspaces. This fragmented massing breaks away from the monolithic office tower typology, allowing increased daylight access, panoramic views, and stronger social interaction across floors.





A defining feature of Quay Quarter Tower is its focus on **human-centered workplace design**. The building promotes **collaboration, wellness, and flexibility** through interconnected atriums, shared social spaces, open circulation, and landscaped terraces. Large communal zones encourage interaction and create healthier, more engaging working environments that prioritize occupant well-being alongside productivity.



Environmental sustainability is embedded throughout the project. The adaptive reuse strategy significantly lowered embodied energy while reducing demolition-related environmental impact. **High-performance façades, energy-efficient systems, natural daylight optimization, and advanced ventilation strategies** contribute to reduced operational energy demand and improved indoor environmental quality.



The tower also strengthens its connection to the public realm. Ground-level activation, improved **pedestrian permeability**, and **integrated public spaces** enhance urban engagement and reinforce the project's civic presence within Sydney's waterfront district. The building becomes not only a workplace destination, but also part of the broader urban experience.



Quay Quarter Tower demonstrates how contemporary architecture can extend the **lifecycle of existing buildings** instead of replacing them entirely. This approach represents a major shift in the construction industry toward **circular economy principles, resource conservation, and regenerative urban development.**



The project illustrates how adaptive reuse, low-carbon construction, and human-focused design can collectively shape more resilient and sustainable cities. It emphasizes that the future of architecture lies not only in building new structures, but in **intelligently transforming what already exists.**



Recognized globally as a benchmark for sustainable high-rise development, Quay Quarter Tower demonstrates that environmental responsibility, commercial viability, and architectural innovation can coexist within a single integrated framework.



Ultimately, the project offers a compelling model for the future of urban regeneration — one where cities reduce carbon impact, preserve resources, and create healthier environments through adaptive and socially responsive design.