



# PROJECT - 02

## PROJECT EDEN

Luxury Residential Tower

## Biophilic Design

**Architects:**

Heatherwick Studio

**Location:**

Singapore

**Area:**

33425 ft<sup>2</sup>

**Year of Completion**

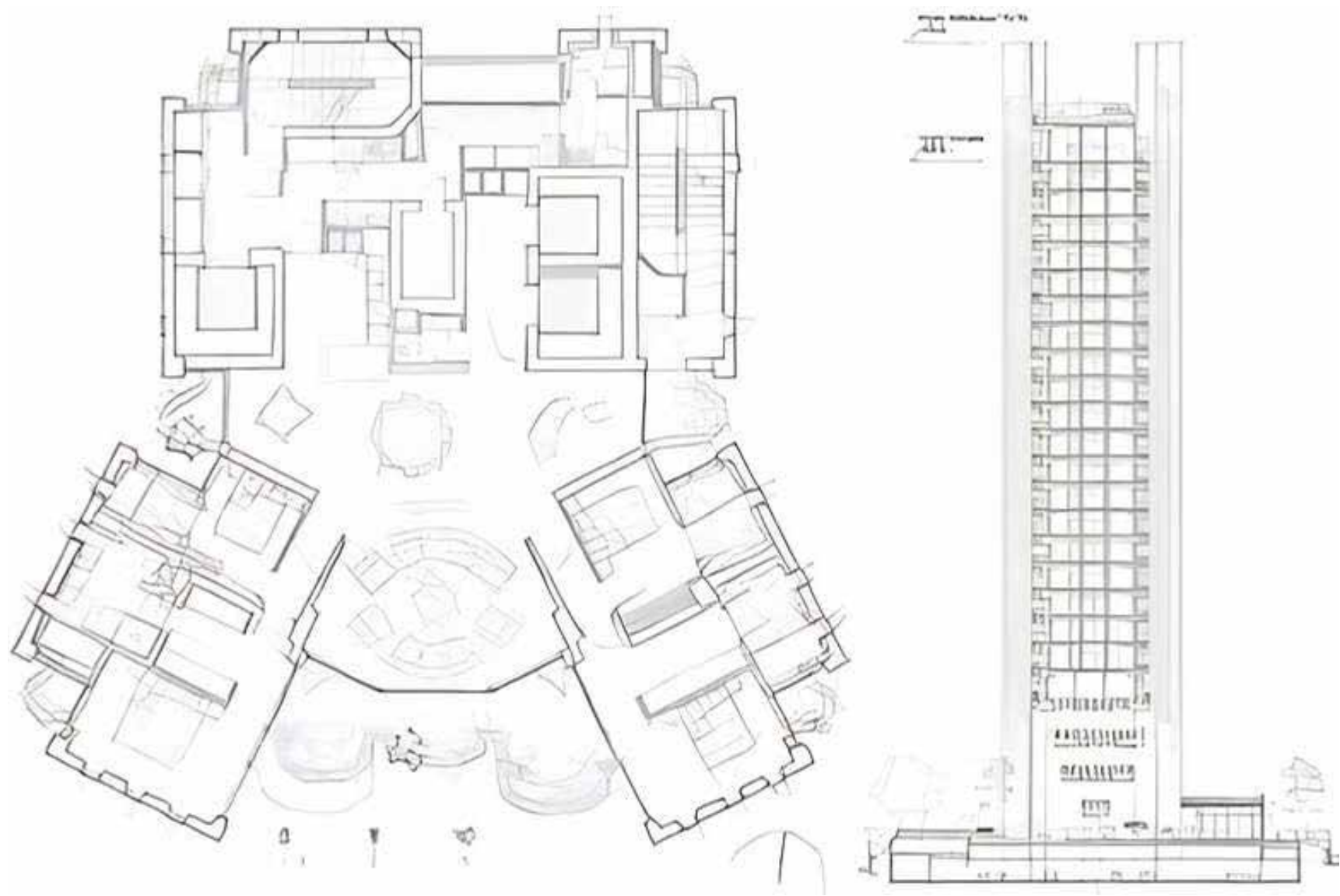
2020

02

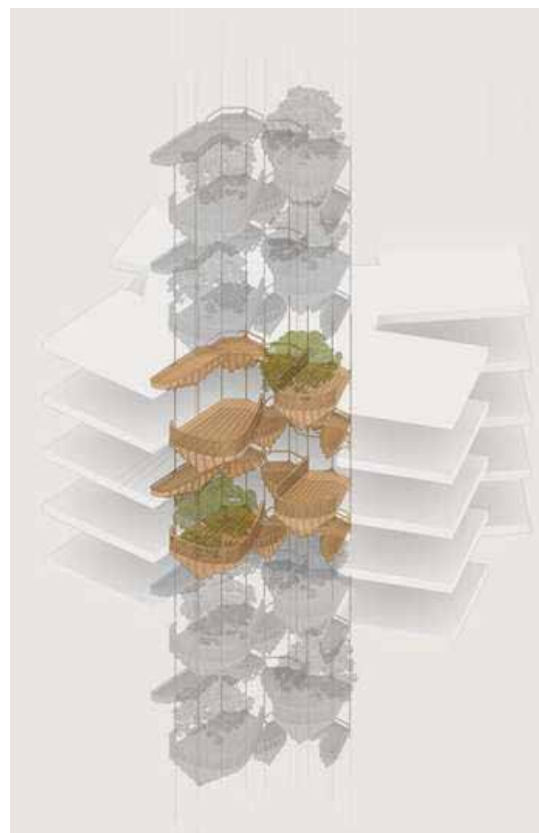
EDEN by Heatherwick Studio is a visionary residential tower in Singapore that reimagines high-rise living through the **integration of nature, climate responsiveness, and human-centered design**. Conceived as a “**home in a garden**,” the project challenges the conventional image of the glass residential tower by introducing lush tropical landscapes directly into the architecture.

Located within one of the world’s densest urban environments, EDEN explores how cities can accommodate vertical growth while maintaining strong connections to greenery, well-being, and ecological identity. The tower’s defining feature is its series of expansive curved balconies filled with dense tropical planting, creating the appearance of stacked garden villas suspended vertically within the city skyline.





Rather than treating vegetation as decorative add-ons, the project **integrates landscape as an essential architectural and environmental system**. Large planted terraces provide shade, improve thermal comfort, enhance biodiversity, and reduce the visual hardness typically associated with urban high-rises. The greenery also contributes to improved air quality and urban heat mitigation within Singapore's tropical climate.



The tower's design responds directly to local environmental conditions. **Deep overhangs** and **generous outdoor terraces** reduce solar heat gain while encouraging natural ventilation and shaded outdoor living. The open, porous organization of the apartments allows daylight and airflow to penetrate deep into interior spaces, reducing dependence on artificial cooling and lighting.



A major aspect of EDEN's architectural philosophy is the reinterpretation of tropical living within a contemporary urban context. The project draws inspiration from Singapore's "City in a Garden" vision by creating residences that prioritize **outdoor connection, greenery, and spatial openness** despite high urban density. Every apartment is designed with direct access to large landscaped terraces, reinforcing the relationship between private living and nature.



The building also demonstrates how **luxury housing** can contribute to broader sustainability goals. By integrating **passive climatic strategies, vegetation, and environmentally responsive planning**, EDEN promotes a healthier and more sustainable urban lifestyle. Its compact footprint and vertical organization support efficient land use while maintaining high levels of environmental quality and livability.



Architecturally, the tower balances sculptural form with ecological softness. The flowing white balconies and cascading greenery create a distinctive organic identity that contrasts sharply with conventional rectilinear residential towers. This approach transforms the building into a **living vertical ecosystem** rather than a sealed architectural object.

EDEN strongly demonstrates how dense urban housing can integrate environmental performance, human well-being, and biophilic design. The project highlights the importance of reconnecting cities with nature while creating healthier and more resilient living environments.

Ultimately, EDEN offers a compelling model for future urban residential design, proving that vertical density and ecological living can coexist through integrated, climate-responsive architecture.