



PROJECT - 01

KAMPUNG ADMIRALTY

Community Living

Biophilic Design Resource Management

Architects:

WOHA Architects

Location:

Admiralty Drive, Singapore

Area:

~100,000 m²

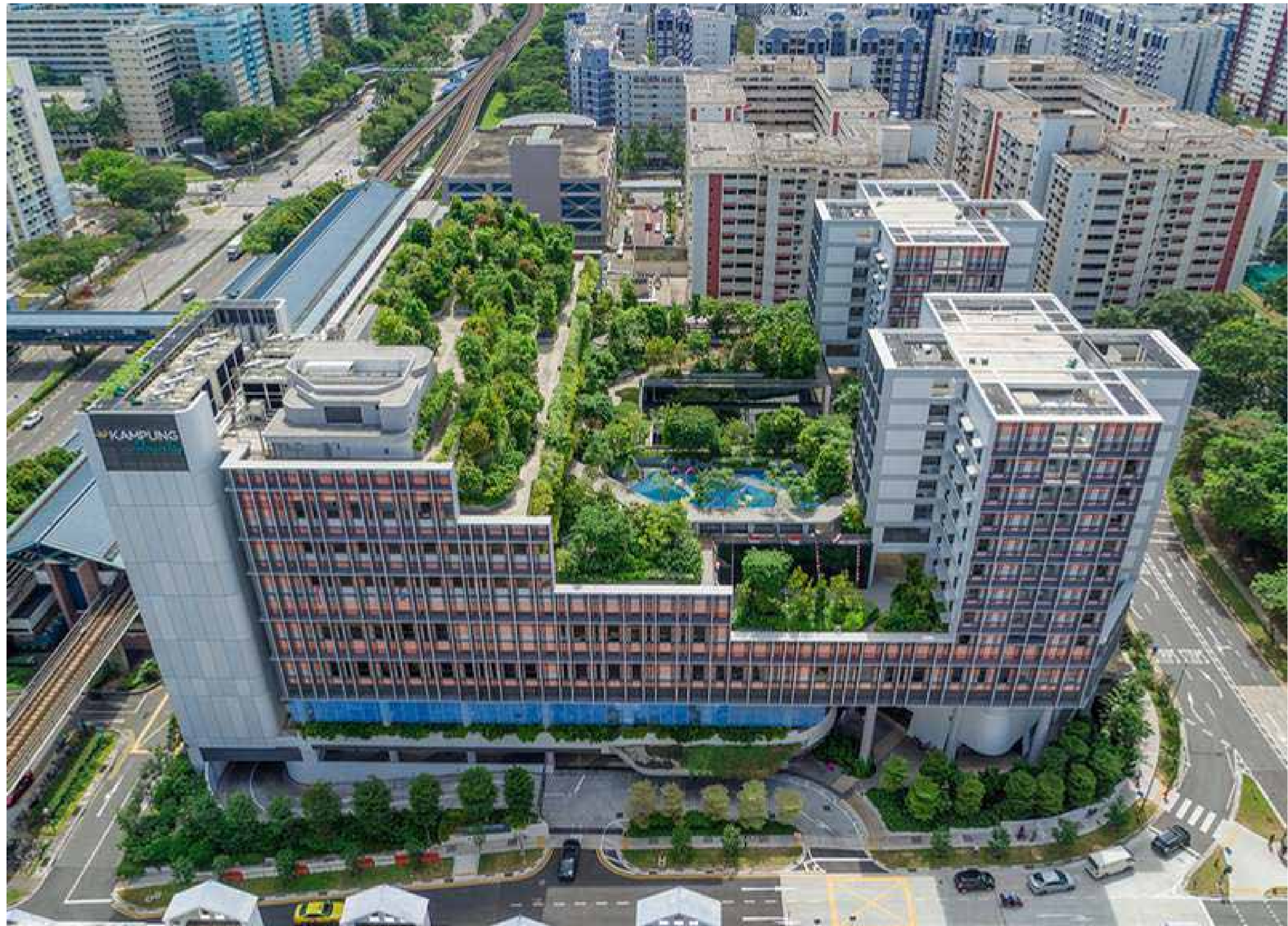
Year of Completion

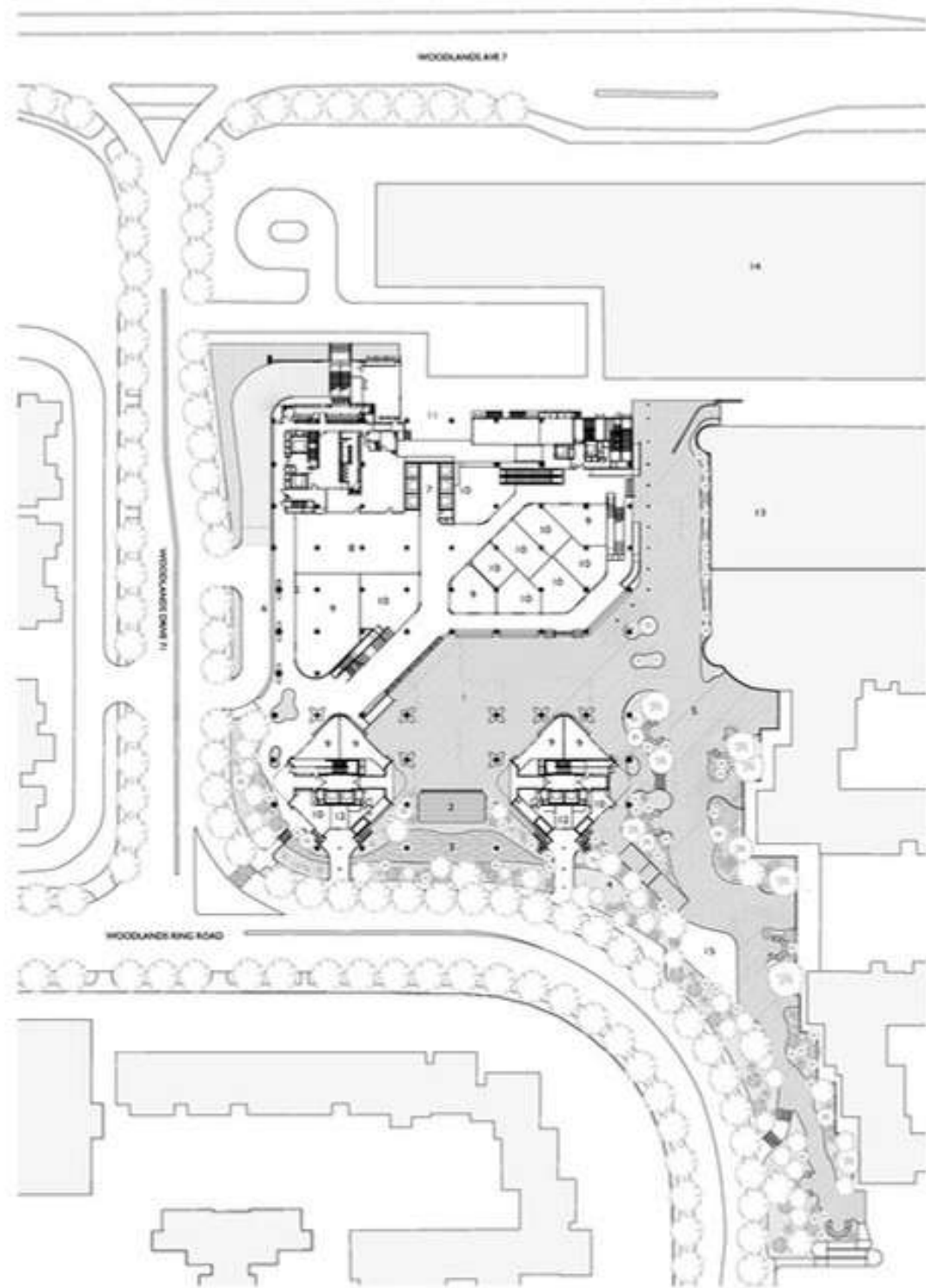
2017

01

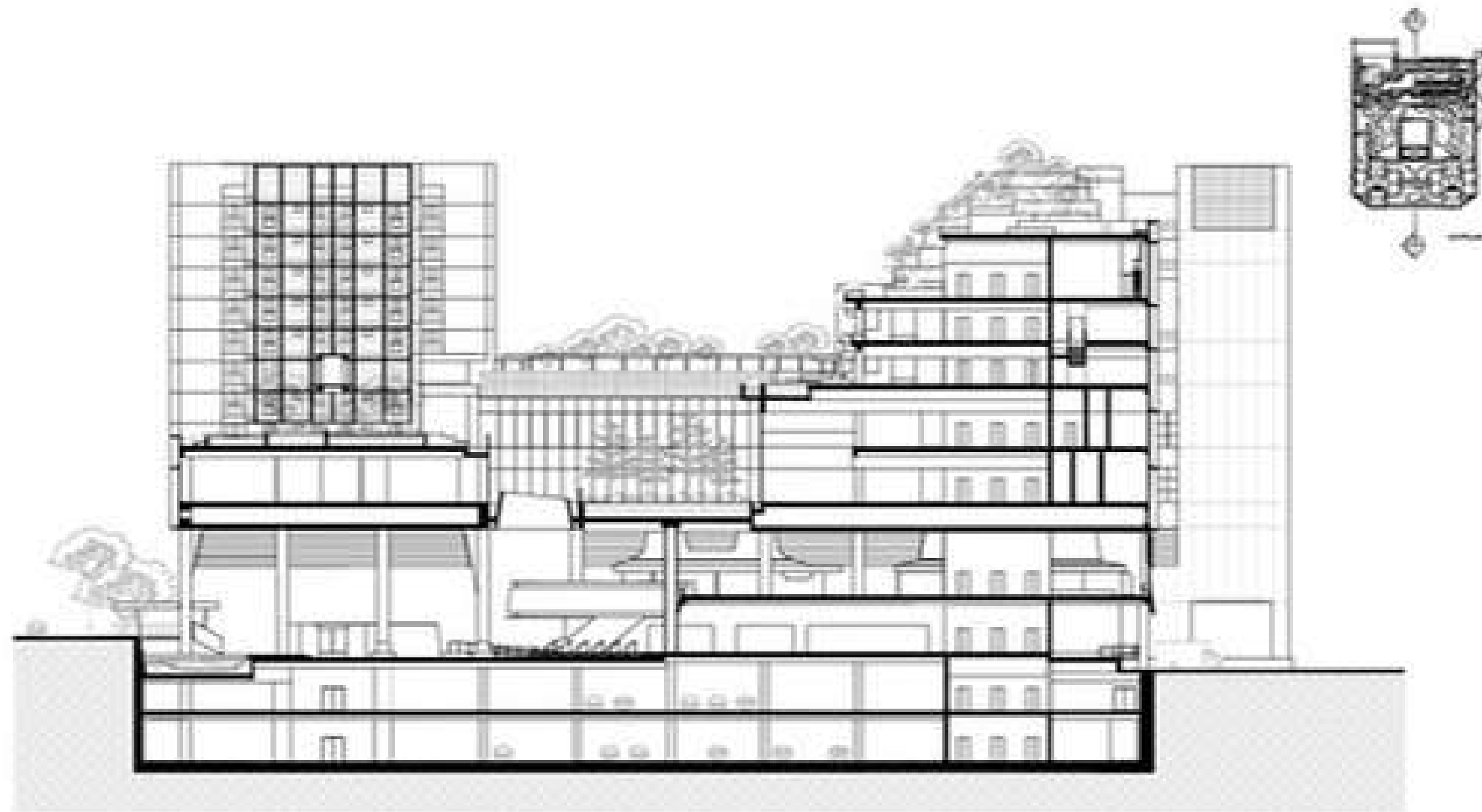
Kampung Admiralty is a landmark mixed-use development in Singapore that redefines **high-density urban living** through an integrated model of housing, healthcare, public space, ecology, and community infrastructure. Designed by WOHA Architects, the project was conceived as Singapore's **first integrated public development for senior citizens**, combining public housing, medical facilities, childcare, retail, community spaces, and sky gardens within a compact vertical framework.

Inspired by the traditional Southeast Asian “kampung” or village, the project reinterprets community living within a contemporary urban condition. Instead of separating functions into isolated buildings, Kampung Admiralty vertically stacks complementary programs to maximize land efficiency while encouraging social interaction, walkability, and environmental performance. The result is a **“city within a building”** where daily needs are accessible within one interconnected ecosystem.



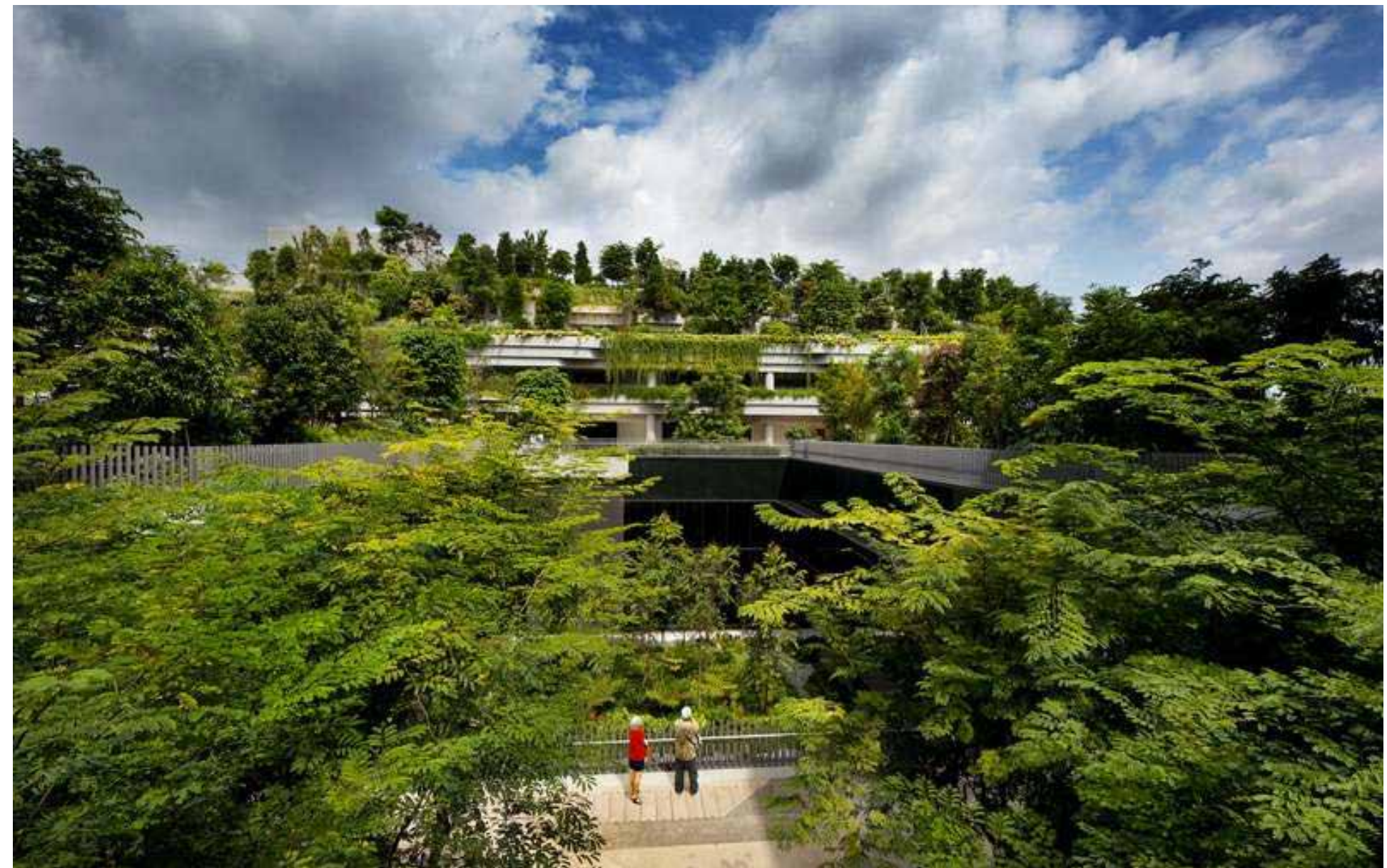


Located adjacent to Admiralty MRT Station, the project responds to challenges such as land scarcity, aging populations, urban heat, and social isolation. Its transit-oriented planning reduces automobile dependency while ensuring universal accessibility for elderly residents.



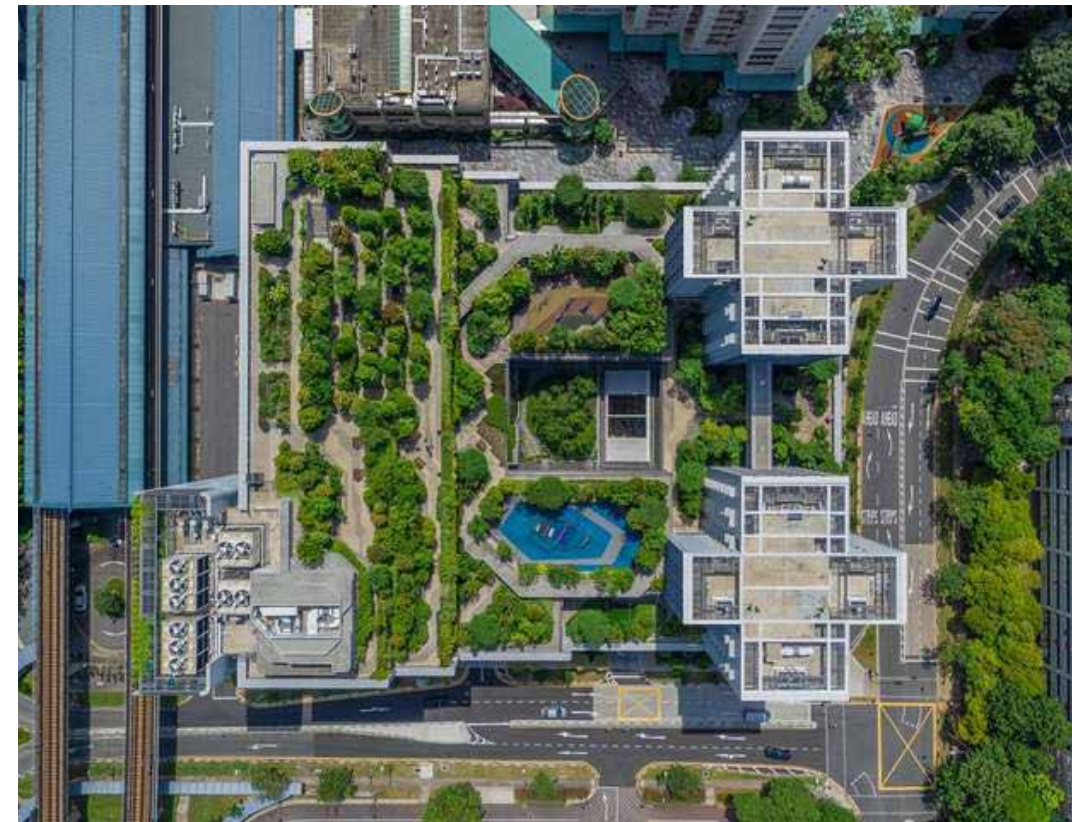
The development is organized into three primary layers:

- **Public Podium:** Retail, food courts, medical facilities, and community spaces activate the ground levels and strengthen civic engagement.
- **Community Park & Sky Terraces:** Elevated gardens and public terraces function as recreational spaces, ecological buffers, and social gathering zones.
- **Senior Housing Towers:** Upper-level residential units are designed with barrier-free accessibility, shared corridors, and close proximity to healthcare and daily amenities.



Climate-responsive strategies are central to the project. Open-sided corridors, porous building massing, naturally ventilated public spaces, and shaded circulation systems reduce cooling loads in Singapore's hot-humid climate. Extensive vertical landscaping, sky gardens, and roof terraces improve thermal comfort, reduce the urban heat island effect, and enhance biodiversity.

Landscape is treated as environmental infrastructure rather than decoration. Community gardens support urban farming, encourage interaction among residents, and contribute to mental and physical well-being. Native tropical planting improves ecological resilience while creating habitats for birds and insects within the dense urban setting.





A key achievement of Kampung Admiralty is its intergenerational social model. By integrating childcare, elderly housing, healthcare, retail, and public spaces, the project fosters interaction between different age groups while supporting independent and dignified aging-in-place.



The project demonstrates that density can coexist with livability, ecology, and social inclusion. It has become a globally recognized benchmark for sustainable urbanism and age-friendly city planning, illustrating how architecture can function simultaneously as environmental infrastructure, social framework, and civic landscape.