

Engineering the Future:

How Technical Innovation is Reshaping Sustainable Architecture



Sustainability in architecture is often communicated through design intent - form, materials, and visible green features. Yet, the real performance of a building is increasingly determined by what lies beneath: engineering systems, technical integration, and data-driven decision-making. For senior architects, this shift demands a closer alignment between design ambition and engineering intelligence.

Across global practices, engineering is no longer a downstream service but a generative force in shaping sustainable outcomes. Early-stage simulation tools, for instance, are enabling architects and engineers to test multiple scenarios - optimising orientation, façade performance, daylight penetration, and energy

loads before a line is finalised. This predictive approach reduces inefficiencies and embeds sustainability at the conceptual stage rather than as a retrofit.

Material innovation is another area redefining possibilities. The emergence of low-carbon concrete, and recycled composites is changing how structures are conceived. Meanwhile, advancements in 3D printing and prefabrication are streamlining construction, reducing waste, and improving precision - particularly relevant for India's scale and speed of development.

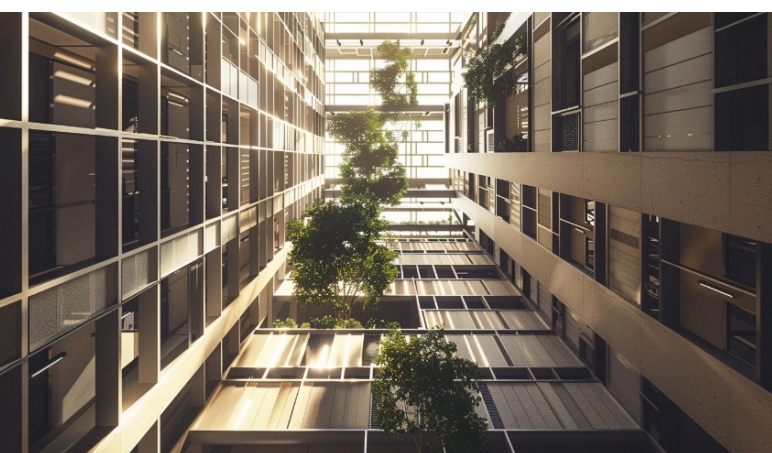
Building systems, too, are becoming smarter and more responsive. Integrated Building Management Systems (BMS), powered by



sensors and AI, allow real-time monitoring and optimisation of energy, water, and indoor environmental quality. Adaptive façades - capable of responding to sunlight, temperature, and occupancy - are moving from experimental prototypes to mainstream applications in high-performance buildings.

Equally significant is the growing focus on lifecycle thinking. Engineering decisions are now being evaluated not just on upfront cost, but on long-term performance, maintenance, and adaptability. Digital twins - virtual replicas of physical buildings - are enabling continuous feedback loops, allowing projects to evolve even after completion. This shift from static to dynamic architecture marks a fundamental change in how buildings are understood and managed.

For India, the opportunity lies in contextual adaptation. While global technologies offer direction, their application must respond to local climates, construction ecosystems,



and economic realities. Hybrid approaches - combining advanced systems with passive strategies - can deliver both performance and feasibility.

In the framework of Sustainable Futures: People. Place. Planet., engineering innovation strengthens all three. It enhances user comfort and well-being, responds intelligently to climatic conditions, and reduces environmental impact through efficiency and optimisation.

Ultimately, the future of sustainable architecture will not be defined by design or engineering in isolation, but by their seamless integration. The most successful projects will be those where technical innovation is not visible as an add-on, but embedded as an invisible, driving force behind every decision.